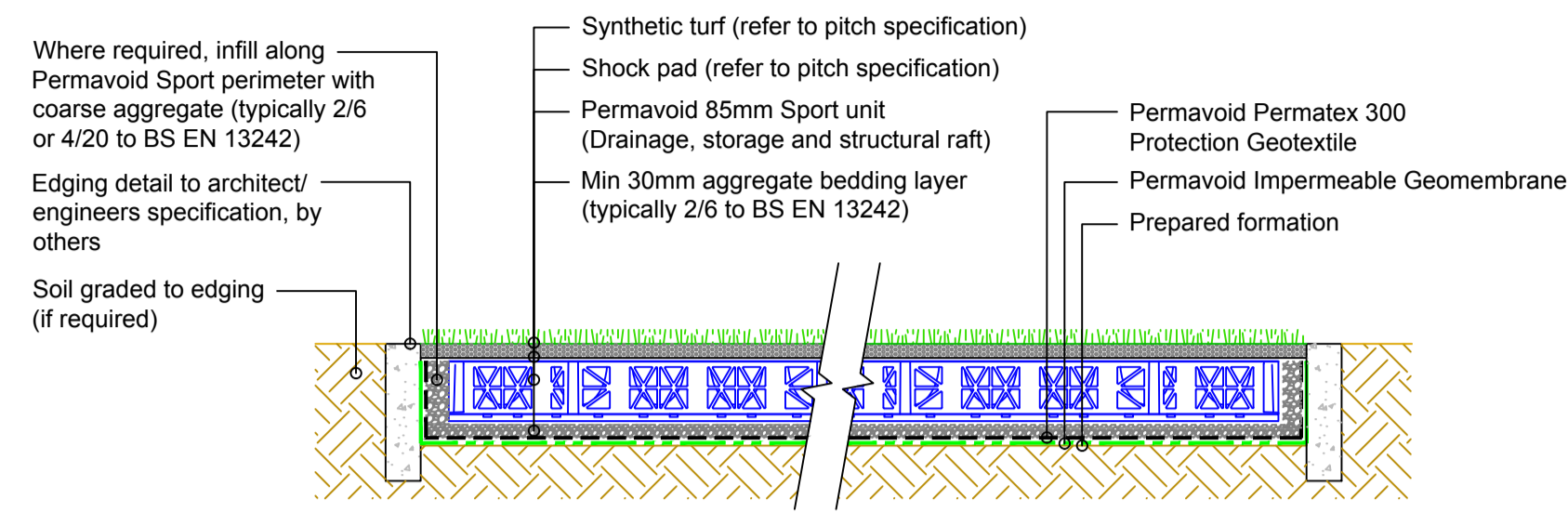
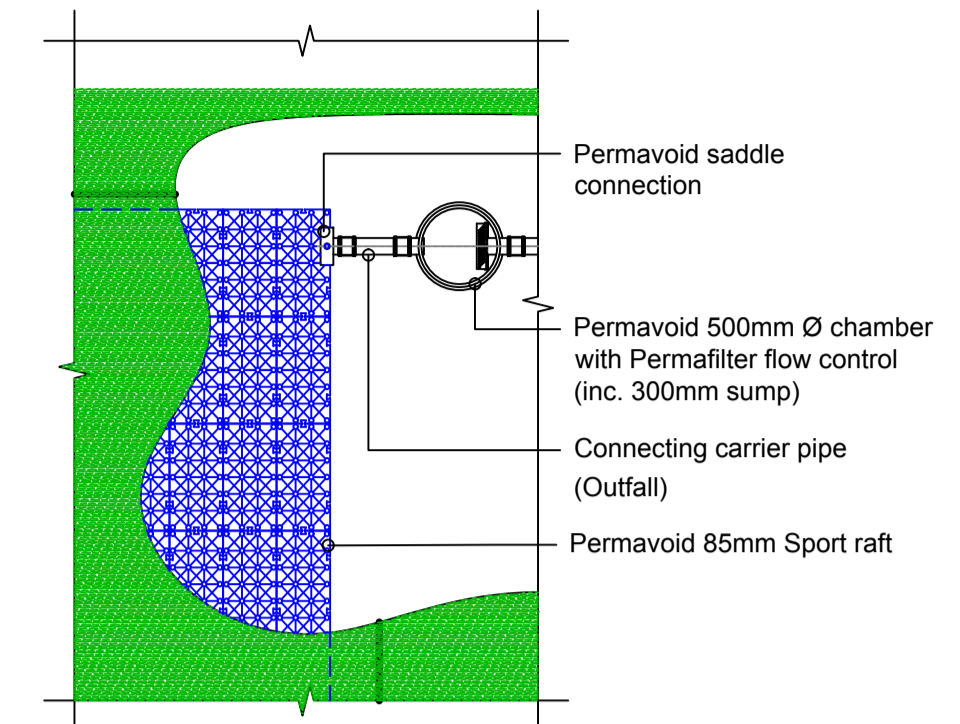


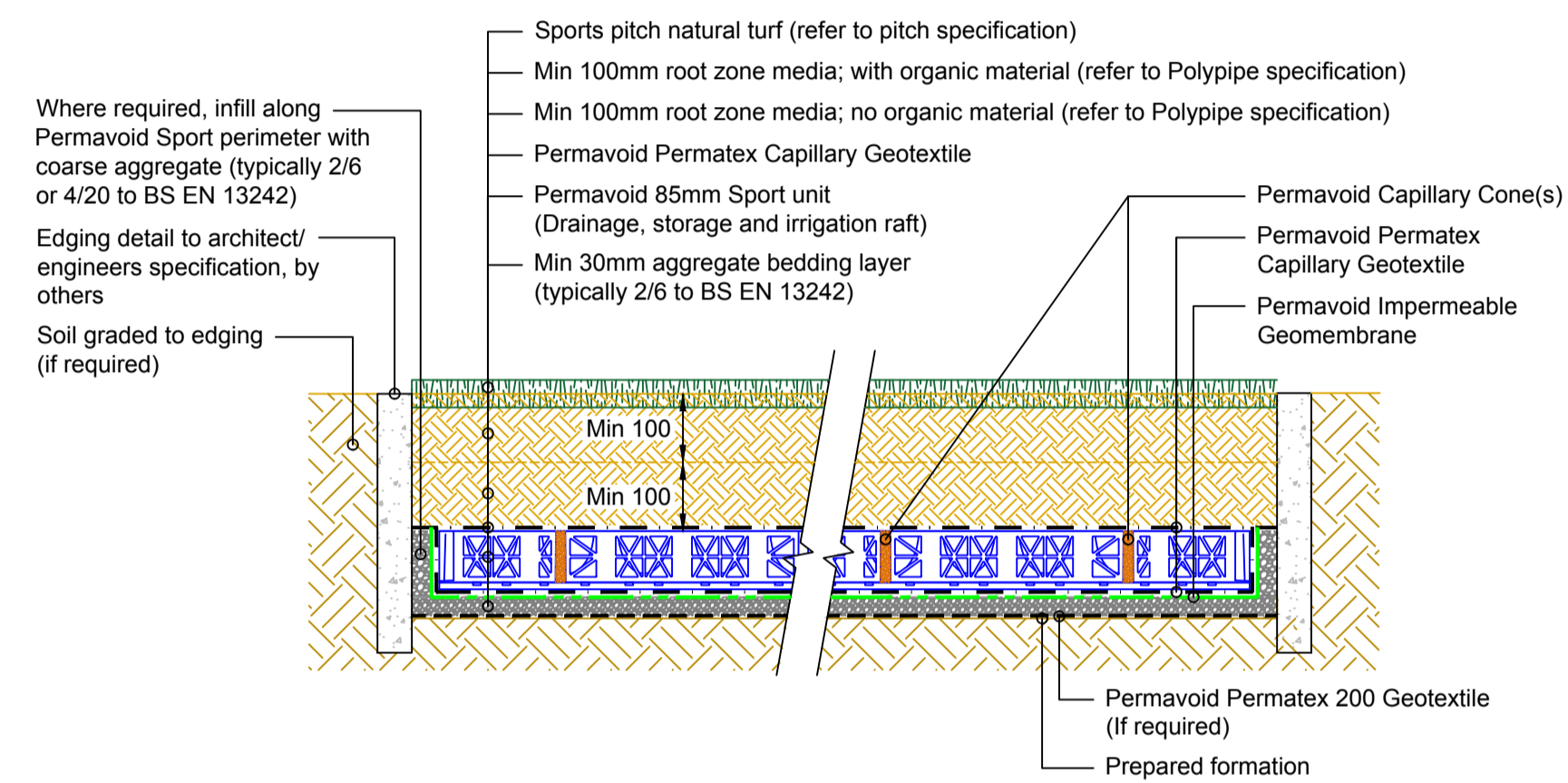
**1** PERMAVOID 85mm SPORT RAFT  
SYNTHETIC TURF SURFACING  
SURFACE WATER INFILTRATION  
Scale 1:10



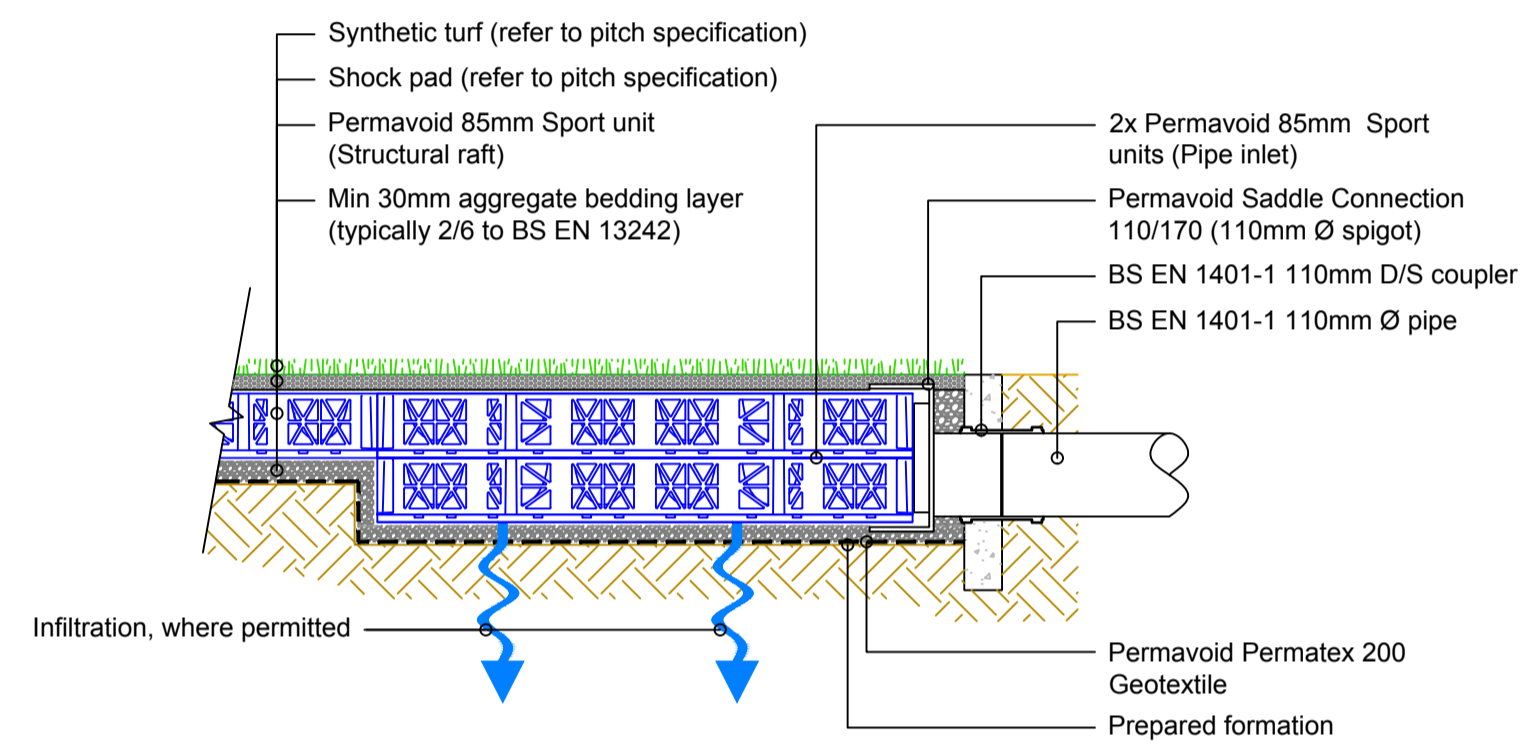
**2** PERMAVOID 85mm SPORT RAFT  
SYNTHETIC TURF SURFACING  
SURFACE WATER ATTENUATION  
Scale 1:10



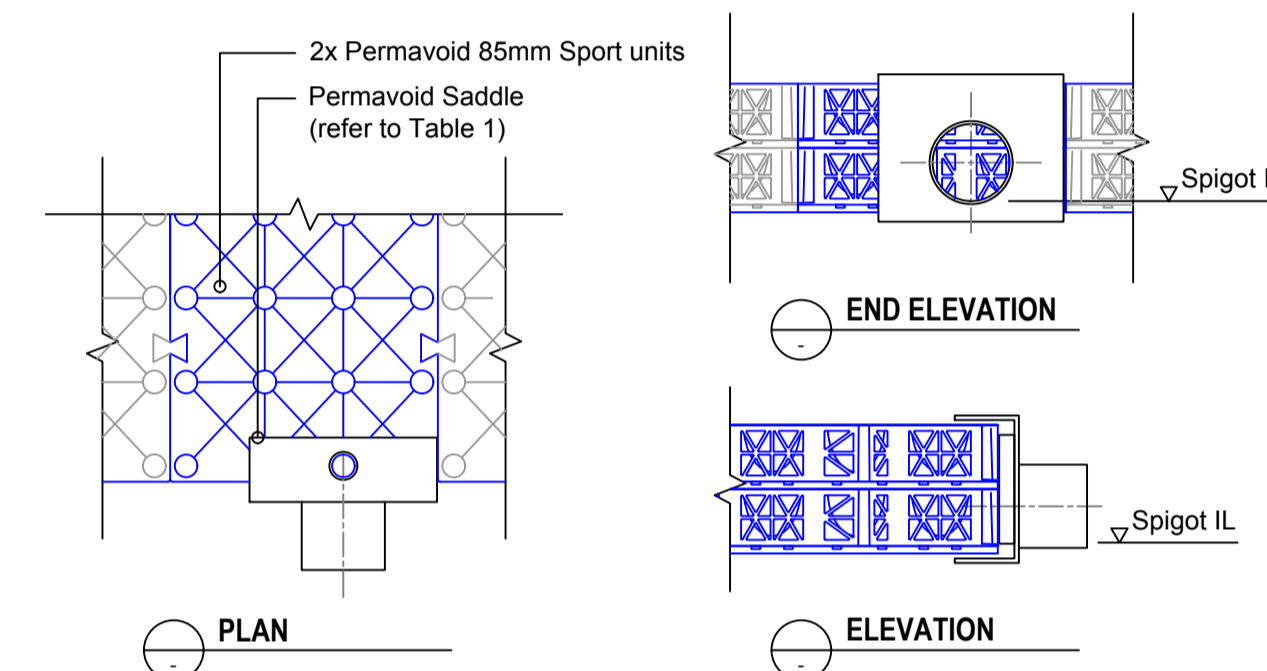
**GA1** PERMAVOID 85mm SPORT RAFT  
TYPICAL OUTFALL  
OPTION - PERMAVOID FLOW CONTROL CHAMBER  
Scale 1:50



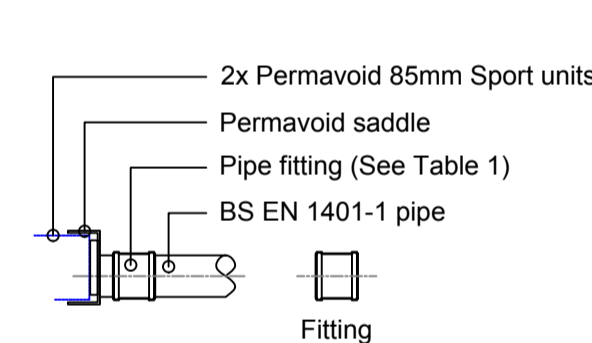
**3** PERMAVOID 85mm SPORT RAFT  
NATURAL TURF SURFACING  
PASSIVE IRRIGATION  
Scale 1:10



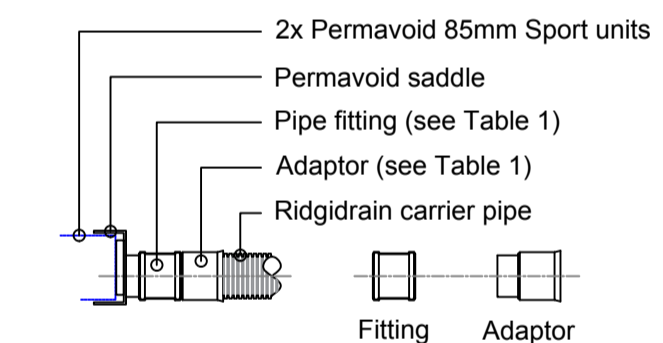
**4** PERMAVOID 85mm SPORT RAFT WITH INLET/ OUTLET SADDLE  
SYNTHETIC TURF SURFACING  
SURFACE WATER INFILTRATION  
Scale 1:10



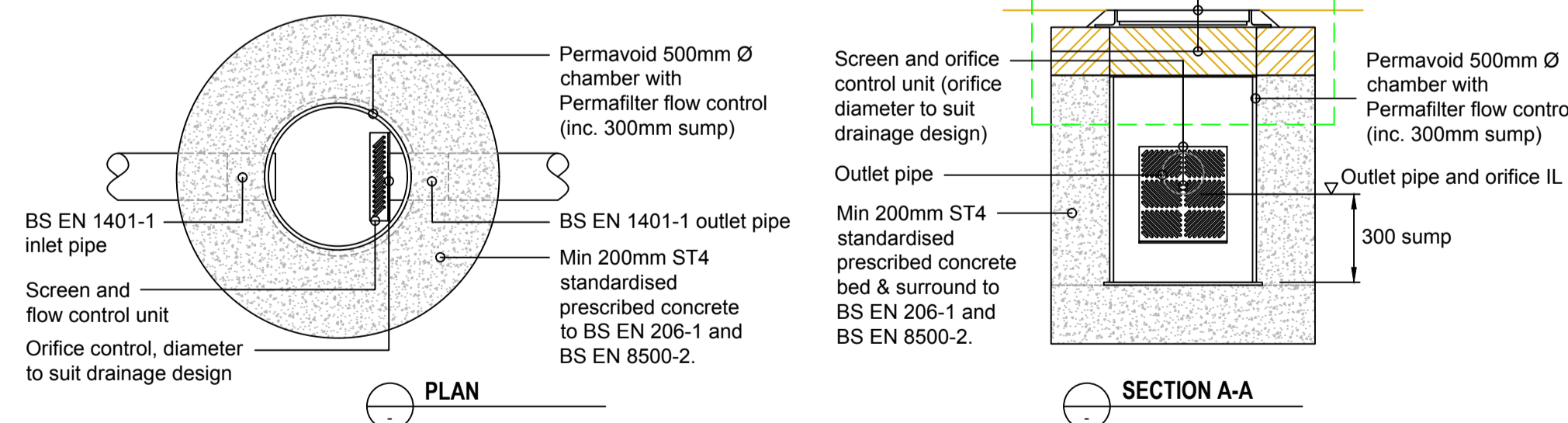
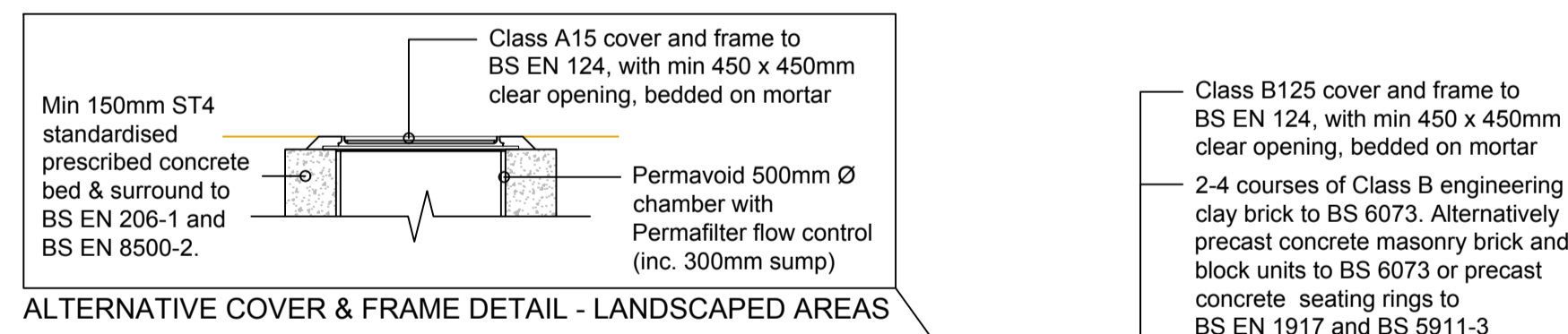
**S1** PERMAVOID 85mm SPORT RAFT  
110mm Ø SADDLE CONNECTION  
Scale 1:10



**A1** PERMAVOID 85mm SPORT UNIT  
SADDLE CONNECTION  
BS EN 1401-1 PIPE  
Scale 1:20



**A2** PERMAVOID 85mm SPORT UNIT  
SADDLE CONNECTION  
RIDGIDRAIN PIPE  
Scale 1:20



**C1** PERMAVOID SPORT  
500mm Ø PERMAFILTER FLOW CONTROL  
TYPICAL UNIT INSTALLATION  
Scale 1:20

Table 1) Permavoid Unit Saddle Connection and Adaptor Options						
Description	Permavoid Saddle Product Code	Fitting		Adaptor		Outfall Pipe
		Description	Product Code	Description	Product Code	
170/110 (110mm Ø spigot)	PV06531	110mm BS EN 1401-1 D/S coupler	UD401	N/A		110mm Ø BS EN 1401-1
170/160 (160mm Ø spigot)	PV06535	160mm BS EN 1401-1 D/S coupler	UD601	N/A		160mm Ø BS EN 1401-1
170/110 (110mm Ø spigot)	PV06531	110mm BS EN 1401-1 D/S coupler	UD401	100mm Ridgidrain socket to 110mm BS EN 1401-1 spigot	ARD100110	100mm Ø Ridgidrain
170/160 (160mm Ø spigot)	PV06535	160mm BS EN 1401-1 D/S coupler	UD601	150mm Ridgidrain socket to 160mm BS EN 1401-1 spigot	ARD150160	150mm Ø Ridgidrain

**Note**  
1) To be read in conjunction with detail A1 and A2

**NOTES**

- To be read in conjunction with architect's / engineer's / sports pitch consultant's specification.
- Typical installation details shown. A site specific assessment of the proposed pitch construction should be undertaken by suitably qualified personnel, considering the underlying ground conditions and overall site drainage plan. Contact Polypipe Civils' technical office for further information.
- All dimensions are in millimetres, unless otherwise stated.
- All dimensions are nominal and may vary within manufacturing or construction tolerances.
- All site temporary and enabling works by others.
- Polypipe products to be installed in accordance with Polypipe Civils recommendations, giving due consideration to the requirements of the approving organisation(s) and the ultimate owner of the installation.
- This drawing is intended for guidance only. All proposed installations should be assessed in the context of the site and expected operational conditions, in addition to the overall site drainage scheme, prior to commencement of final design or construction activities.
- All construction activities shall be executed by competent personnel, in accordance with all relevant legislation, regulations, standards or codes of practice.

REV	AMENDMENT	DATE

<p>Polypipe Civils North Road, Loughborough Leicestershire, LE11 1LE Tel: 01509 615100 Fax: 01509 615215 www.polypipe.com/civils</p>	<p>PROJECT: POLYPIPE PERMAVOID SPORTS SYSTEM</p> <p>DRAWING TITLE: PERMAVOID 85mm SPORT RAFT TYPICAL CONSTRUCTION DETAILS</p>	<p>STATUS: FOR INFORMATION</p> <p>SHEET NO: 1 of 1</p> <p>DATE: 01/03/2019</p> <p>DRAWING NO: IG-PVS-SD-RAFT-001</p>
	<p>SCALE: NTS</p>	<p>DRAWN BY: SH</p>