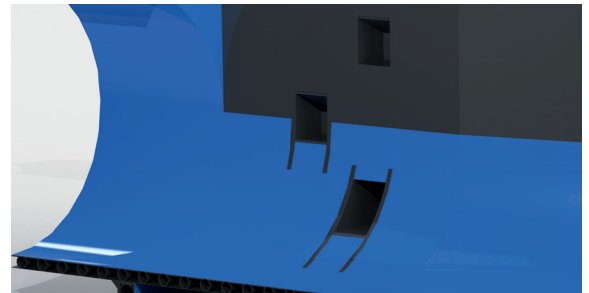


Ridgistorm-XL Toe Holds act to create a step within the channel wall, and are designed to provide safe and secure assistance for maintenance personnel when accessing or exiting a chamber channel.

Toe Holds are required in adoptable chambers with outflow diameters of 600mm or greater, and in Highway Works chambers with outflow diameters of 500mm or greater.



## Toe Holds

The total number of Toe Holds required is dependent on the Ridgistorm-XL Chamber outflow diameter, as detailed in the table opposite.

## Key Benefits

- Compliant with Sewers for Adoption, 7th Edition and MCHW F Series
- Designed to complement our existing RIDGISTORMAccess manholes
- Welded components, structurally integrated into the channel ensure a water tight connection and chamber integrity
- Toe Holds are installed flush with the inside of the channel to ensure hydraulics are maintained
- Manufactured and fitted in a quality controlled environment prior to delivery to site, ensuring a high quality finish and increased health and safety benefits
- Corrosion resistant, offering excellent chemical resistance to all common substances found in stormwater

## Technical Support

Detailed guidance and assistance is available. For further information, please contact our Technical Team on **+44 (0) 1509 615 100** or email [civils@polypipe.com](mailto:civils@polypipe.com)

## SPECIFICATION

NOMINAL OUTFLOW DIAMETER (MM)	TOTAL NUMBER OF TOE HOLDS
600	1
750	2
900	2
1050	3
1200	3
1500	4
1800	5



All descriptions and illustrations in this publication are intended for guidance only and shall not constitute a 'sale by description'. All dimensions given are nominal and Polypipe may modify and change the information, products and specifications from time to time for a variety of reasons, without prior notice. The information in this publication is provided 'as is' on November 2017. Updates will not be issued automatically. This information is not intended to have any legal effect, whether by way of advice, representation or warranty (express or implied). We accept no liability whatsoever (to the extent permitted by law) if you place any reliance on this publication you must do so at your own risk. All rights reserved. Copyright in this publication belongs to Polypipe and all such copyright may not be used, sold, copied or reproduced in whole or part in any manner in any media to any person without prior consent. Polypipe is a registered trademark of Polypipe. All Polypipe products are protected by Design Right under CDPA 1988. Copyright © 2017 Polypipe. All rights reserved.