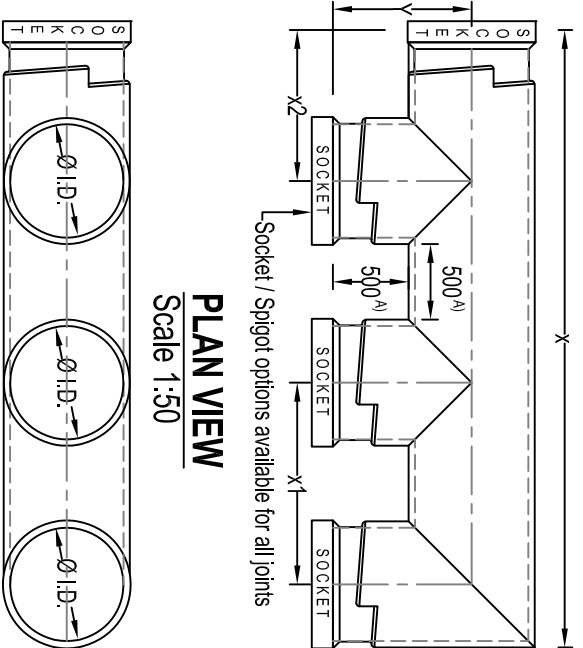


TYPICAL "TRIPLE F" DIMENSIONS



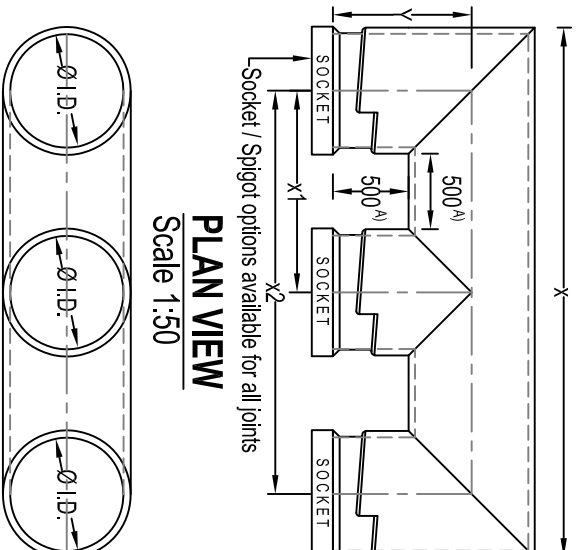
FRONT ELEVATION
Scale 1:50

PLAN VIEW
Scale 1:50

Pipe I.D.	Product Code	Dimension [mm]			
		X	X ₁	X ₂	Y
750	RST0720FFSES*	4014	1338	919	
900	RST0920FFSES*	4464	1488	994	
1050	RST1020FFSES*	4956	1652	1076	
1200	RST1220FFSES*	5436	1812	1156	
1500	Not available as standard this size				
1800	Not available as standard this size				
2100	Not available as standard this size				
2400	Not available as standard this size				
2700	Not available as standard this size				
3000	Not available as standard this size				

NOTES
* defines jointing type, where: S = Ring seal & EF = Electro-fusion.
1. Ring seal currently available for pipes ≤1800Ø only

TYPICAL "E SECTION" DIMENSIONS



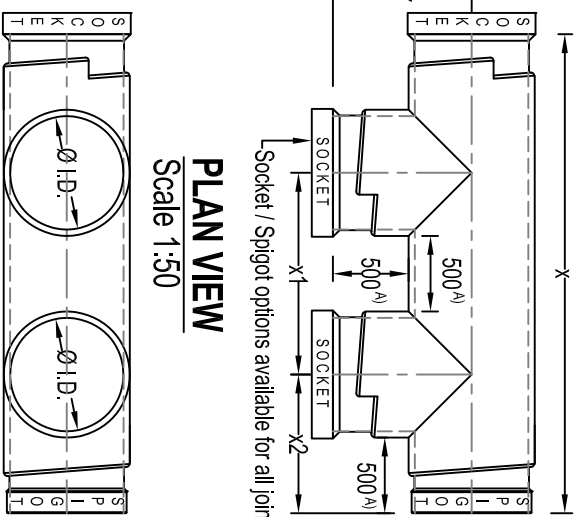
FRONT ELEVATION
Scale 1:50

PLAN VIEW
Scale 1:50

Pipe I.D.	Product Code	Dimension [mm]			
		X	X ₁	X ₂	Y
750	RST0720ESES*	3514	1338	2676	919
900	RST0920ESES*	3964	1488	2976	994
1050	RST1020ESES*	4456	1652	3304	1076
1200	RST1220ESES*	4936	1812	3624	1156
1500	RST1520ESES*	5956	2152	4304	1326
1800	Not available as standard this size				
2100	Not available as standard this size				
2400	Not available as standard this size				
2700	Not available as standard this size				
3000	Not available as standard this size				

NOTES
* defines jointing type, where: S = Ring seal & EF = Electro-fusion.
1. Ring seal currently available for pipes ≤1800Ø only

TYPICAL "DOUBLE T" DIMENSIONS



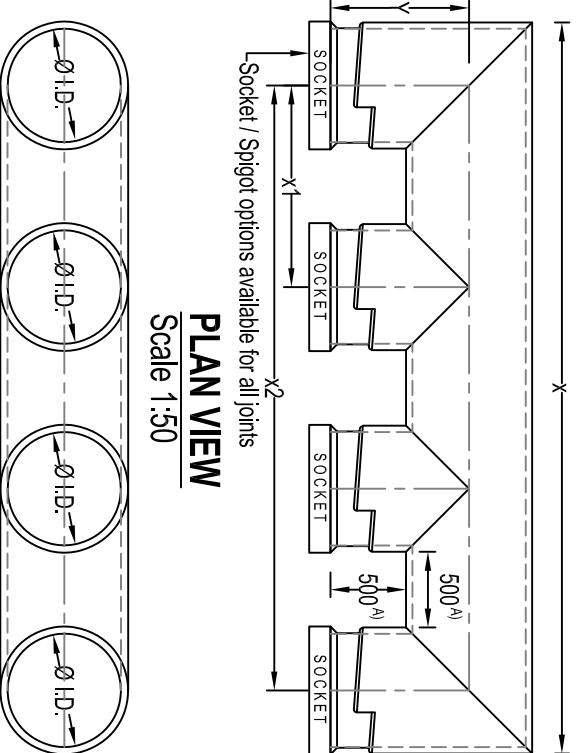
FRONT ELEVATION
Scale 1:50

PLAN VIEW
Scale 1:50

Pipe I.D.	Product Code	Dimension [mm]			
		X	X ₁	X ₂	Y
750	RST0720EJTTS*	3176	1338	919	
900	RST0920EJTTS*	3476	1488	994	
1050	RST1020EJTTS*	3804	1652	1076	
1200	RST1220EJTTS*	4124	1812	1156	
1500	RST1520EJTTS*	4804	2152	1326	
1800	RST1820EJTTS*	5412	2456	1478	
2100	Not available as standard this size				
2400	Not available as standard this size				
2700	Not available as standard this size				
3000	Not available as standard this size				

NOTES
* defines jointing type, where: S = Ring seal & EF = Electro-fusion.
1. Ring seal currently available for pipes ≤1800Ø only

TYPICAL "DOUBLE C" DIMENSIONS



FRONT ELEVATION
Scale 1:50

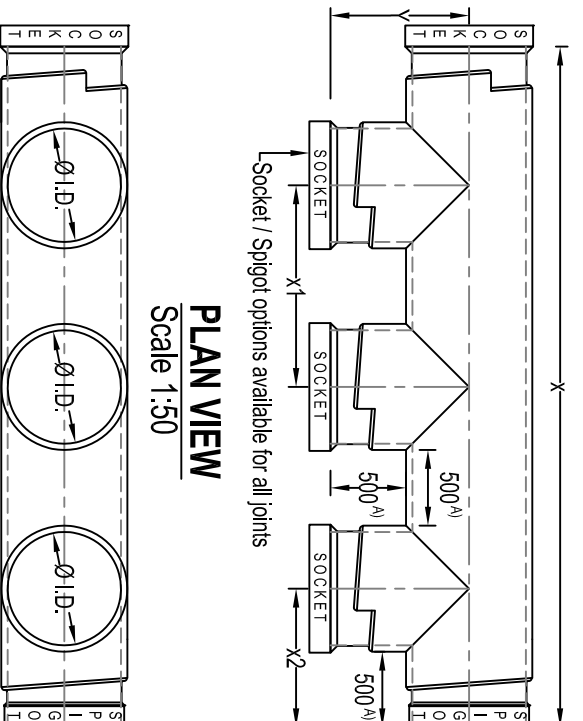
PRODUCT CODE EXPLANATION					
RST	07	20	60	S	FFF / TTT
Ridgstorm	Pipe size Ø750mm	Pipe stiffness class SN2, Stiffness classes SN1 and above available	Length 6m min 1,25m	Ring Seal Joint	Type of unit such as 'Triple F Unit'

NOMINAL DIMENSIONS

Pipe I.D.	Product Code	Dimension [mm]			
		X	X ₁	X ₂	Y
750	RST0720CCSES*	4852	1338	4014	919
900	RST0920CCSES*	5452	1488	4464	994
1050	Not available as standard this size				
1200	Not available as standard this size				
1500	Not available as standard this size				
1800	Not available as standard this size				
2100	Not available as standard this size				
2400	Not available as standard this size				
2700	Not available as standard this size				
3000	Not available as standard this size				

NOTES
* defines jointing type, where: S = Ring seal & EF = Electro-fusion.
1. Ring seal currently available for pipes ≤1800Ø only

TYPICAL "TRIPLE T" DIMENSIONS



FRONT ELEVATION
Scale 1:50

PRODUCT CODE EXPLANATION					
RST	07	20	60	E	FFF / TTT
Ridgstorm	Pipe size Ø750mm	Pipe stiffness class SN2, Stiffness classes SN1 and above available	Length 6m min 1,25m	Electro-fusion Joint	Type of unit such as 'Triple F Unit'

NOMINAL DIMENSIONS

Pipe I.D.	Product Code	Dimension [mm]			
		X	X ₁	X ₂	Y
750	RST0720EJTTS*	4514	1338	919	
900	RST0920EJTTS*	4964	1488	994	
1050	RST1020EJTTS*	5456	1652	1076	
1200	Not available as standard this size				
1500	Not available as standard this size				
1800	Not available as standard this size				
2100	Not available as standard this size				
2400	Not available as standard this size				
2700	Not available as standard this size				
3000	Not available as standard this size				

NOTES
* defines jointing type, where: S = Ring seal & EF = Electro-fusion.
1. Ring seal currently available for pipes ≤1800Ø only

FRONT ELEVATION
Scale 1:50

NOTE A)
As standard the min. spacing between pipes is assumed to be 500mm. Widths less than 500mm may be achieved if confirmed by structural calculations and the proposed installation general arrangement is confirmed with Polypipe Civils Technical Team. Greater widths may be required to achieve a specified level of compaction, or to allow jointing of pipes/ fittings

NOTES

- All dimensions in millimetres, unless otherwise stated.
- All dimensions are nominal and may vary within manufacturing or construction tolerances.
- All site temporary and enabling works by others.
- Ridgstorm-XL units to be installed in accordance with Polypipe Civils recommendations (refer to Polypipe technical guidance for further information); giving due consideration to the requirements of the organisation who will be taking ultimate ownership of the installation. Dimensions are based on a minimum stiffness class SN2 pipe; corresponding to the standardised pipe profiles current at the time of this drawing's issue.
- This drawing is intended for guidance only. Confirmation of the information contained within this document should be sought from the consulting engineers before final design or construction activities commence.
- Unless otherwise stated, all Ridgstorm-XL is supplied to site without direct means of lifting incorporated. The lift supervisor must assess and plan the lift, in the circumstances of the lift, and provide slings and/or other controls as deemed necessary to ensure a safe lift.
- Minimum and maximum cover depths applicable, dictated by the expected native ground conditions, trafficking and proposed Ridgstorm-XL pipe specification.

The information in this document is of an illustrative nature and is supplied by Polypipe Civils without charge. This document does not form the whole or any part of a contract or intended contract with the user. The information within this document should not be solely relied upon to determine the suitability or installation requirements of our products for a proposed application and expected site conditions; expert advice should be sought in this respect. Final determination of the suitability of any information or material for the use contemplated and the manner of use is the sole responsibility of the user and the user must assume all risk and liability in connection therewith. Further information with regard to liabilities may be found at www.polypipe.com/discclaimer.



Polypipe Civils

Charnwood Business Park,
North Road, Loughborough,
Leicestershire, LE11 1LE

Tel: 01509 615100
Fax: 01509 615215
www.polypipe.com/civils
www.polypipe.com/wms

PROJECT
RIDGISTORM-XL STANDARD FITTINGS

TITLE
LARGE JUNCTION DIMENSIONS

STATUS
FOR INFORMATION

DATE
16/03/16

ORIGINAL SIZE
A3

DRAWINGS No.
RST_SD_FT_005

SCALE
AS SHOWN

DRAWN BY
JL

REV.